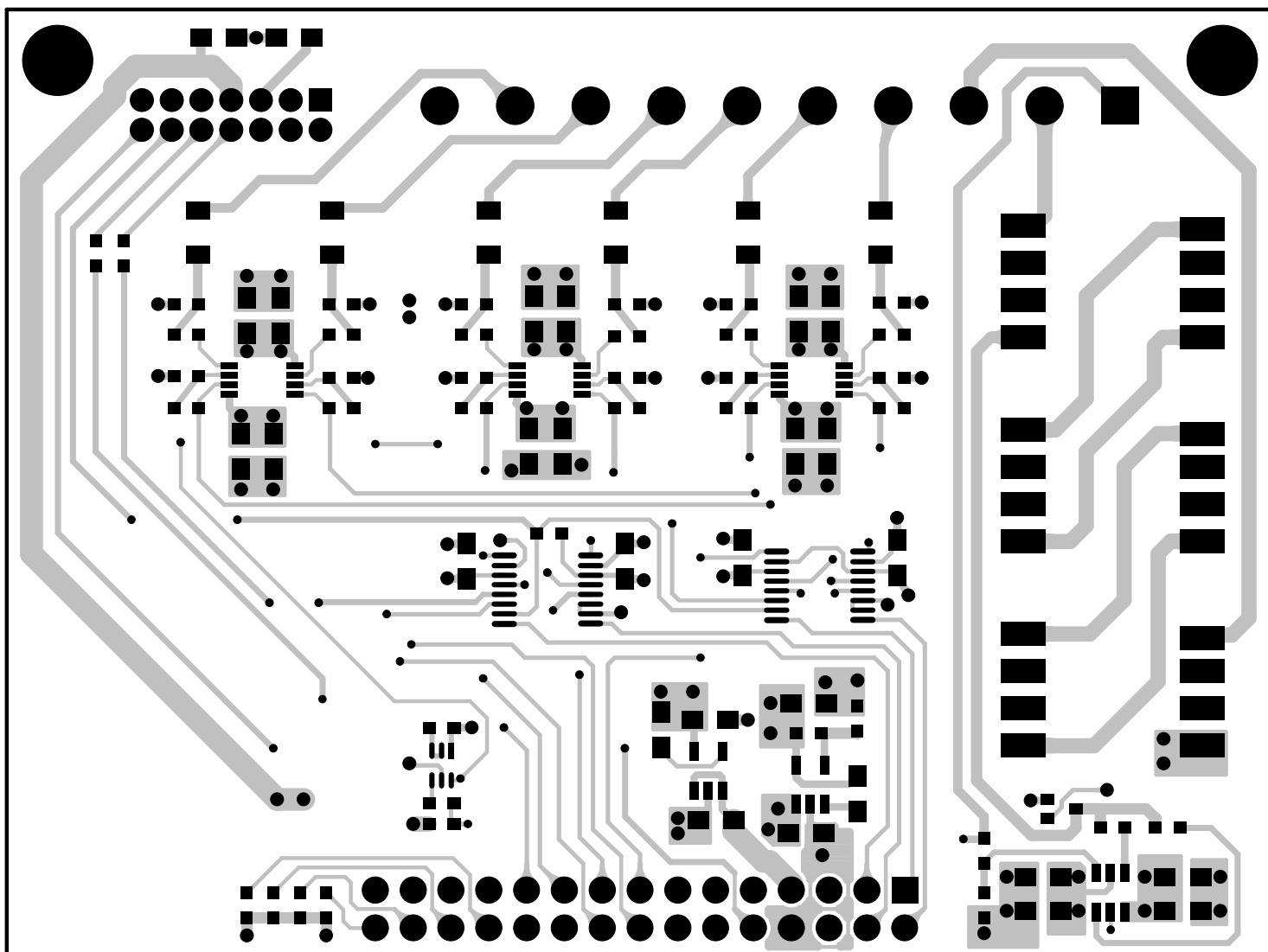


ANALOG DEVICES INC.

LB3031A REV 4

07/21/20

TOP SILKSCREEN
TOP ASSEMBLY

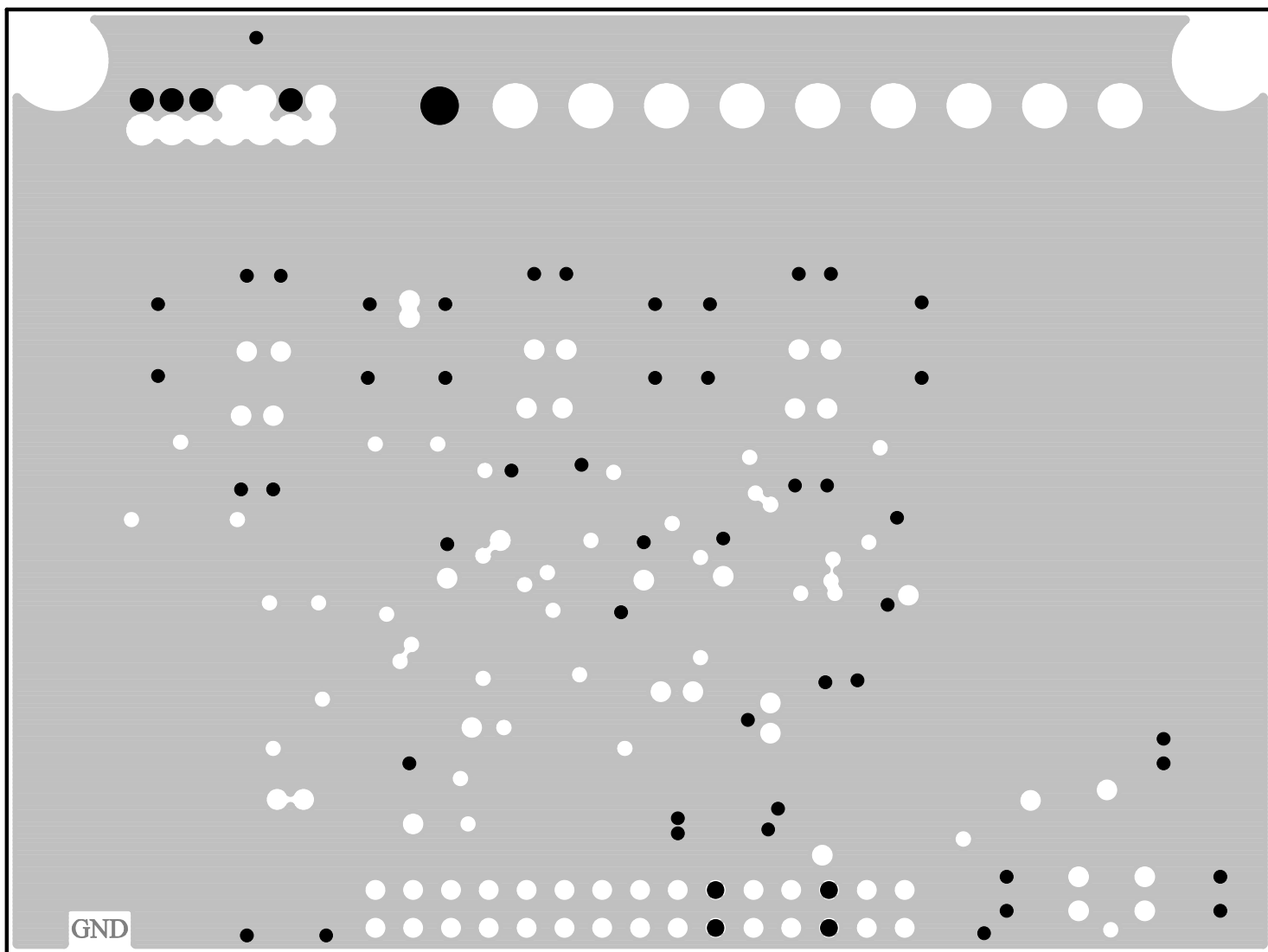


ANALOG DEVICES INC.

LB3031A REV 4

07/21/20

L1-COMPONENT SIDE



ANALOG DEVICES INC.

LB3031A REV 4

07/21/20

L2-GND LAYER

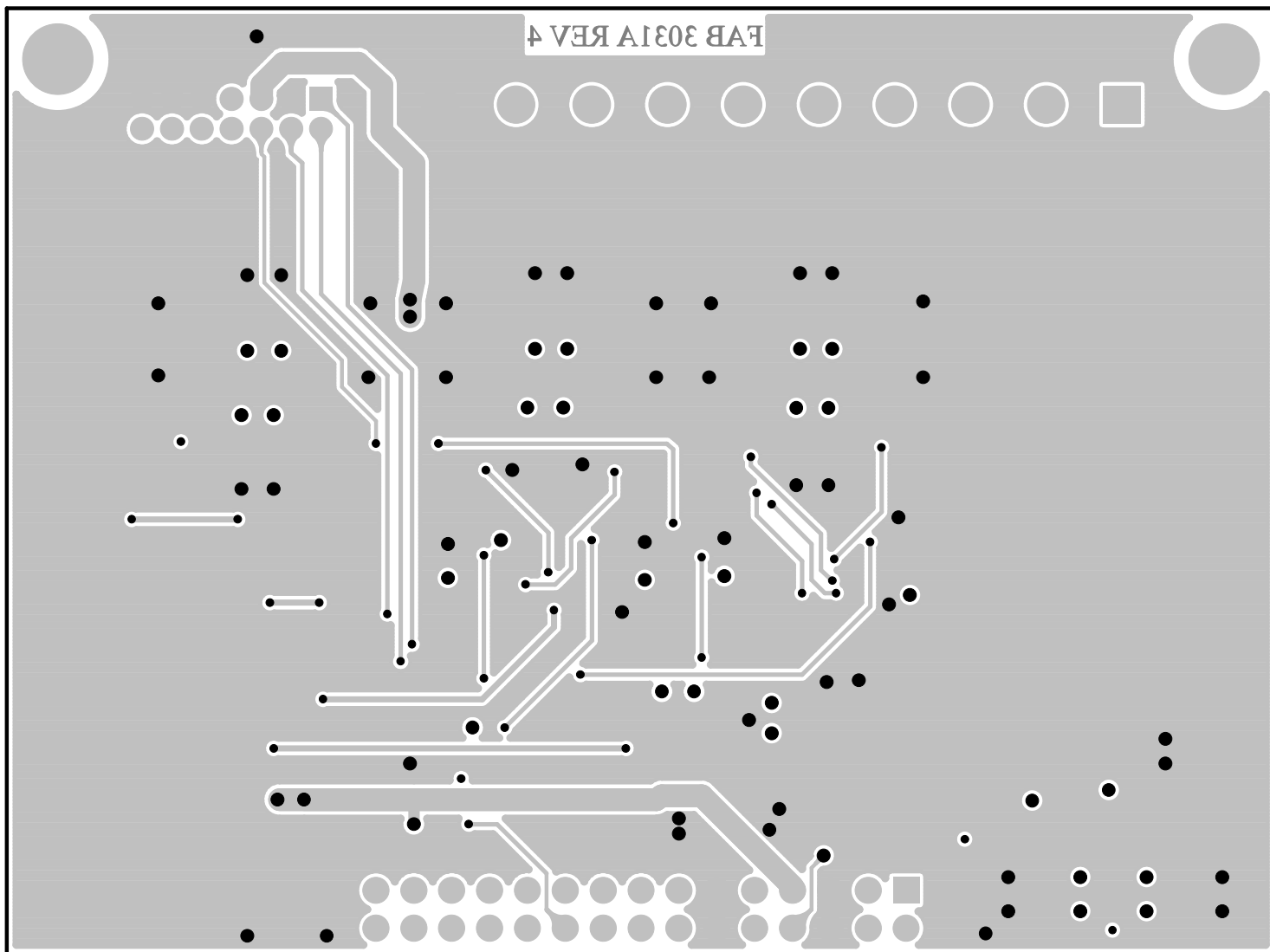


ANALOG DEVICES INC.

LB3031A REV 4

07/21/20

L3-PWR LAYER

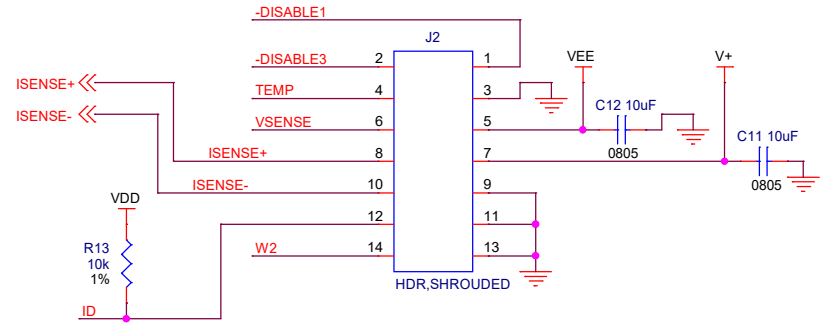
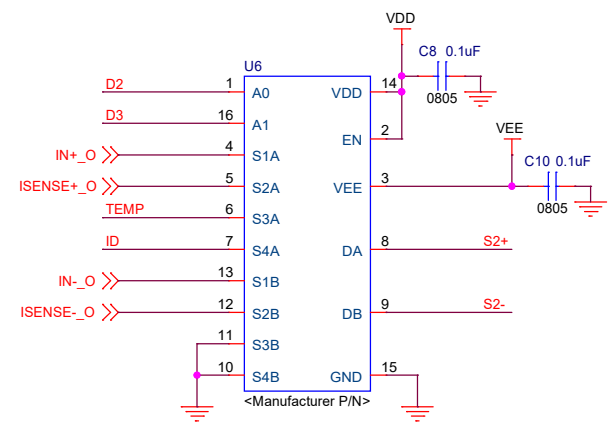
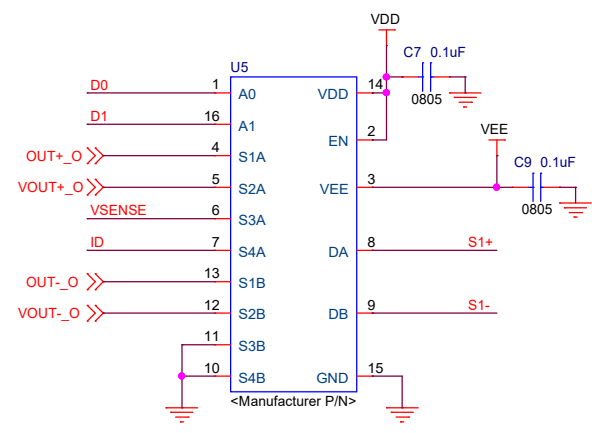
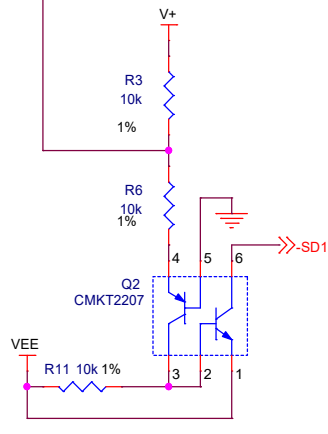
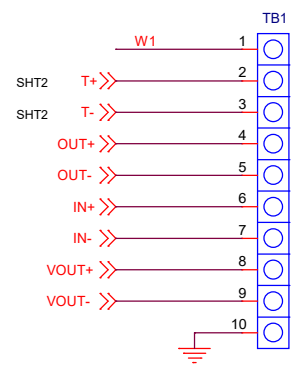
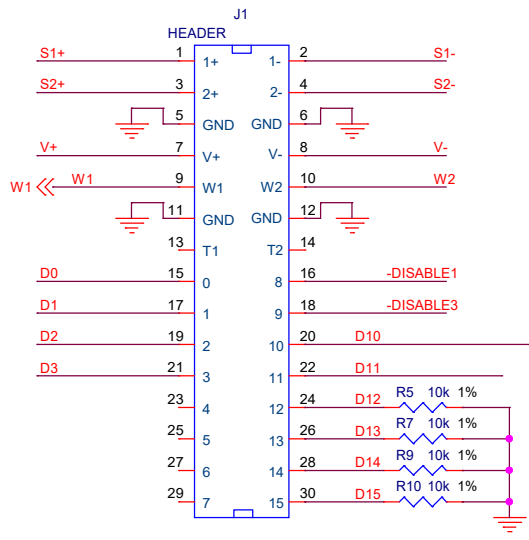
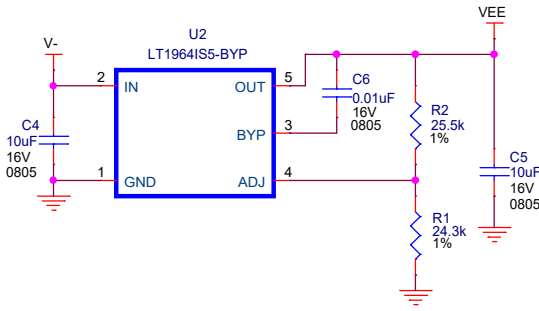
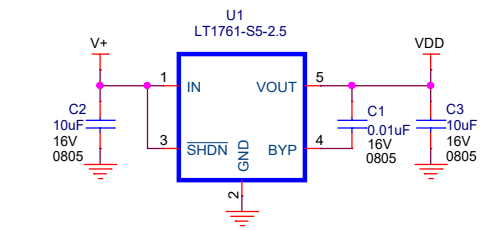


ANALOG DEVICES INC.

LB3031A REV 4

07/21/20

L4-BOTTOM LAYER





REVISION HISTORY				
ECO	REV	DESCRIPTION	DATE	APPROVED
	4	PROTO	07/21/20	BQ

CUSTOMER NOTICE

ANALOG DEVICES HAS MADE A BEST EFFORT TO DESIGN A CIRCUIT THAT MEETS CUSTOMER-SUPPLIED SPECIFICATIONS; HOWEVER, IT REMAINS THE CUSTOMER'S RESPONSIBILITY TO VERIFY PROPER AND RELIABLE OPERATION IN THE ACTUAL APPLICATION. COMPONENT SUBSTITUTION AND PRINTED CIRCUIT BOARD LAYOUT MAY SIGNIFICANTLY AFFECT CIRCUIT PERFORMANCE OR RELIABILITY. CONTACT ANALOG DEVICES APPLICATIONS ENGINEERING FOR ASSISTANCE.

THIS CIRCUIT IS PROPRIETARY TO ANALOG DEVICES AND SUPPLIED FOR USE WITH ANALOG DEVICES PARTS.

APPROVALS	
PCB DES.	BQ
APP ENG.	BQ

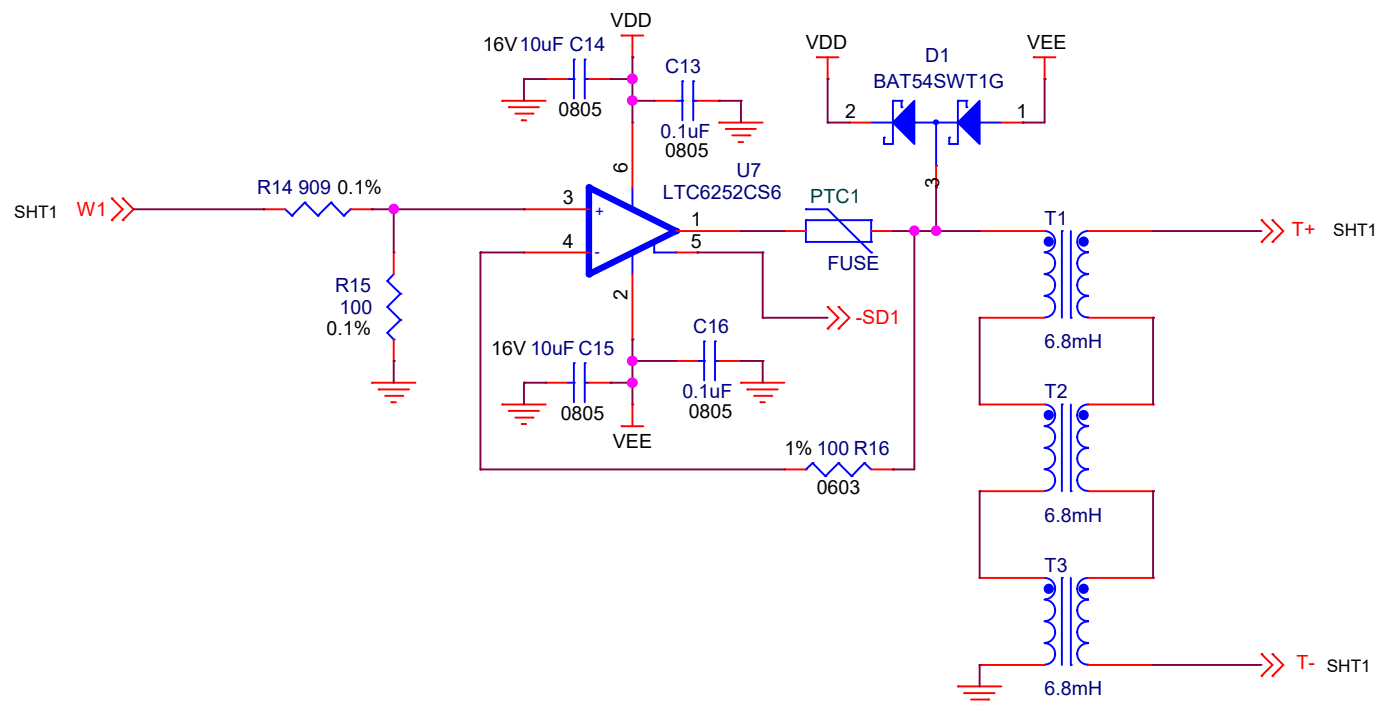
www.analog.com

TITLE: SCHEMATIC

LTpowerAnalyzer Main Board

IC NO. LTC6269,LT1964,LTC6252	SCHEMATIC NO. AND REVISION:
SKU NO. LB3031A	710-LB3031A_REV04

SIZE: NONE	DATE: Friday, March 05, 2021	SHEET 1 OF 3
-------------------	-------------------------------------	----------------------------



CUSTOMER NOTICE

ANALOG DEVICES HAS MADE A BEST EFFORT TO DESIGN A CIRCUIT THAT MEETS CUSTOMER-SUPPLIED SPECIFICATIONS; HOWEVER, IT REMAINS THE CUSTOMER'S RESPONSIBILITY TO VERIFY PROPER AND RELIABLE OPERATION IN THE ACTUAL APPLICATION. COMPONENT SUBSTITUTION AND PRINTED CIRCUIT BOARD LAYOUT MAY SIGNIFICANTLY AFFECT CIRCUIT PERFORMANCE OR RELIABILITY. CONTACT ANALOG DEVICES APPLICATIONS ENGINEERING FOR ASSISTANCE.

THIS CIRCUIT IS PROPRIETARY TO ANALOG DEVICES AND SUPPLIED FOR USE WITH ANALOG DEVICES PARTS.

APPROVALS

PCB DES. *MS*

APP ENG. *BL*



www.analog.com



TITLE: SCHEMATIC

LTpowerAnalyzer Main Board

IC NO. LTC6269,LT1964,LTC6252

SKU NO. LB3031A

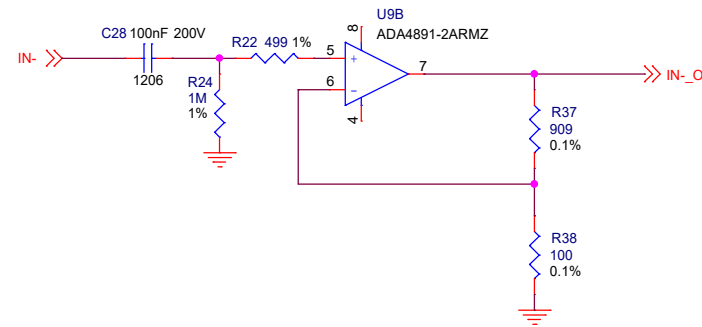
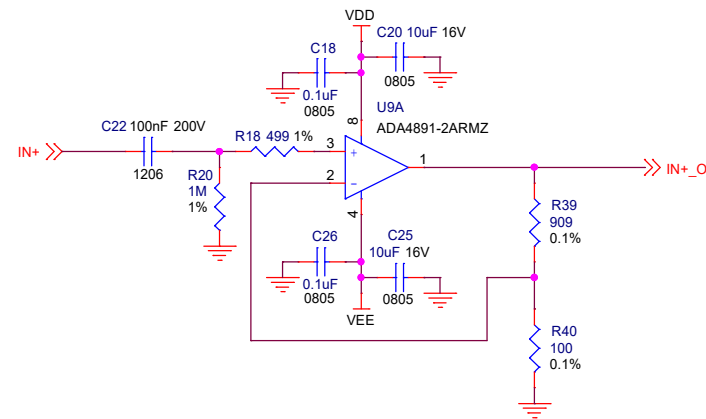
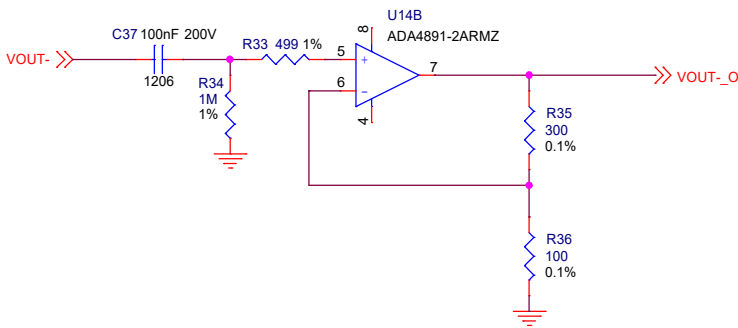
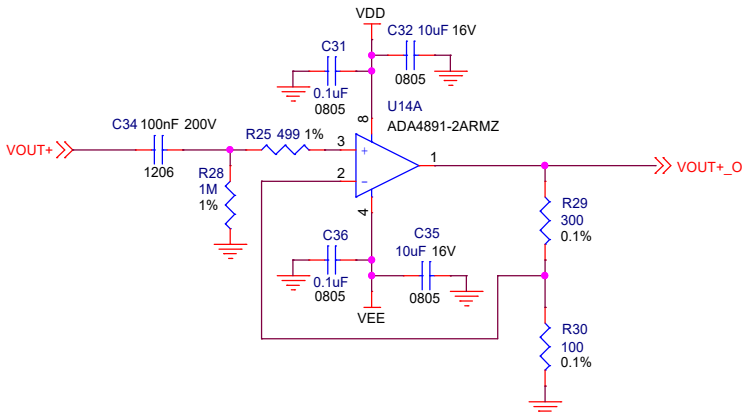
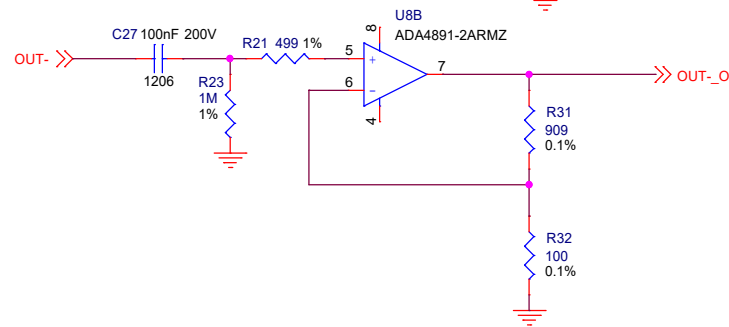
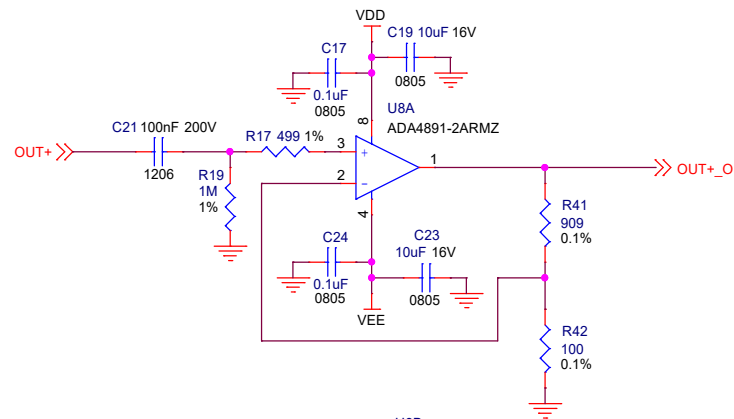
SCHEMATIC NO. AND REVISION:

710-LB3031A_REV04

SIZE: NONE

DATE: Friday, March 05, 2021

SHEET 2 OF 3



CUSTOMER NOTICE

ANALOG DEVICES HAS MADE A BEST EFFORT TO DESIGN A CIRCUIT THAT MEETS CUSTOMER-SUPPLIED SPECIFICATIONS; HOWEVER, IT REMAINS THE CUSTOMER'S RESPONSIBILITY TO VERIFY PROPER AND RELIABLE OPERATION IN THE ACTUAL APPLICATION. COMPONENT SUBSTITUTION AND PRINTED CIRCUIT BOARD LAYOUT MAY SIGNIFICANTLY AFFECT CIRCUIT PERFORMANCE OR RELIABILITY. CONTACT ANALOG DEVICES APPLICATIONS ENGINEERING FOR ASSISTANCE.

THIS CIRCUIT IS PROPRIETARY TO ANALOG DEVICES AND SUPPLIED FOR USE WITH ANALOG DEVICES PARTS.

APPROVALS

PCB DES.

MS

APP ENG.

BL



www.analog.com

TITLE: SCHEMATIC

LTpowerAnalyzer Main Board

IC NO. LTC6269,LT1964,LTC6252

SKU NO. LB3031A

SCHEMATIC NO. AND REVISION:

710-LB3031A_REV04

SIZE: NONE

DATE: Friday, March 05, 2021

SHEET 3 OF 3

ADDED TO PARTS LIST	
PCB1	PCB, LB3031A REV04
LB1	LABEL
STNCL1	TOOL, STENCIL, LB3031A REV04
<div> <div>MP1</div> <div>STANDOFF</div> </div> <div> <div>MP2</div> <div>STANDOFF</div> </div>	

<div>CUSTOMER NOTICE</div> <div>ANALOG DEVICES HAS MADE A BEST EFFORT TO DESIGN A CIRCUIT THAT MEETS CUSTOMER-SUPPLIED SPECIFICATIONS; HOWEVER, IT REMAINS THE CUSTOMER'S RESPONSIBILITY TO VERIFY PROPER AND RELIABLE OPERATION IN THE ACTUAL APPLICATION. COMPONENT SUBSTITUTION AND PRINTED CIRCUIT BOARD LAYOUT MAY SIGNIFICANTLY AFFECT CIRCUIT PERFORMANCE OR RELIABILITY. CONTACT ANALOG DEVICES APPLICATIONS ENGINEERING FOR ASSISTANCE.</div>	APPROVALS		<div><div><div></div><div>ANALOG DEVICES</div></div><div><div></div><div>POWER BY LINEAR™</div></div></div> <div>www.analog.com</div>	
	PCB DES.	MS	TITLE: SCHEMATIC LTpowerAnalyzer Main Board	
	APP ENG.	BQ		
			IC NO. LTC6269,LT1964,LTC6252 SKU NO. LB3031A	
THIS CIRCUIT IS PROPRIETARY TO ANALOG DEVICES AND SUPPLIED FOR USE WITH ANALOG DEVICES PARTS.			SCHEMATIC NO. AND REVISION: 710-LB3031A_REV04	
			SIZE: NONE	DATE: Friday, March 05, 2021
			SHEET 4 OF 3	